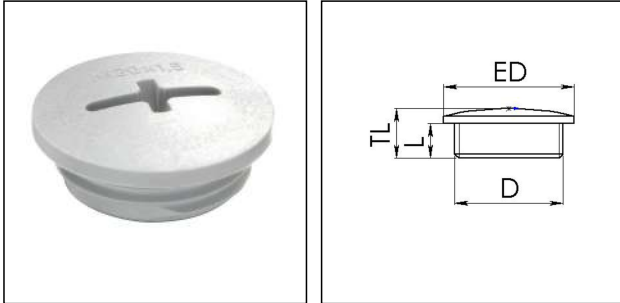


EVSG 40

Stop end, polyamide, RAL 7035, M40



Products may differ in size, colour and appearance to those shown. If you require further information or customisation, please contact us directly.



| | |
|---------------------------------|-----------------------------|
| Material | Polyamide, fibre reinforced |
| Temp. range min | -40 °C |
| Temp. range max | 100 °C |
| Glow wire test | 650 °C |
| Protection class | IP56 |
| Advice | with sealing IP66/IP68 |
| Thread type | M |
| Ø Connection thread D | 40 |
| Lead | 1,5 |
| Length screw-in thread L | 8 mm |
| Total length TL | 13 mm |
| External diameter ED | 46 mm |
| Product Color | RAL 7035 |
| Order no. RAL 7035 | 10060629 |
| Type | EVSG 40 |
| Packing unit | 50 |
| ETIM-Classification | EC000032 |

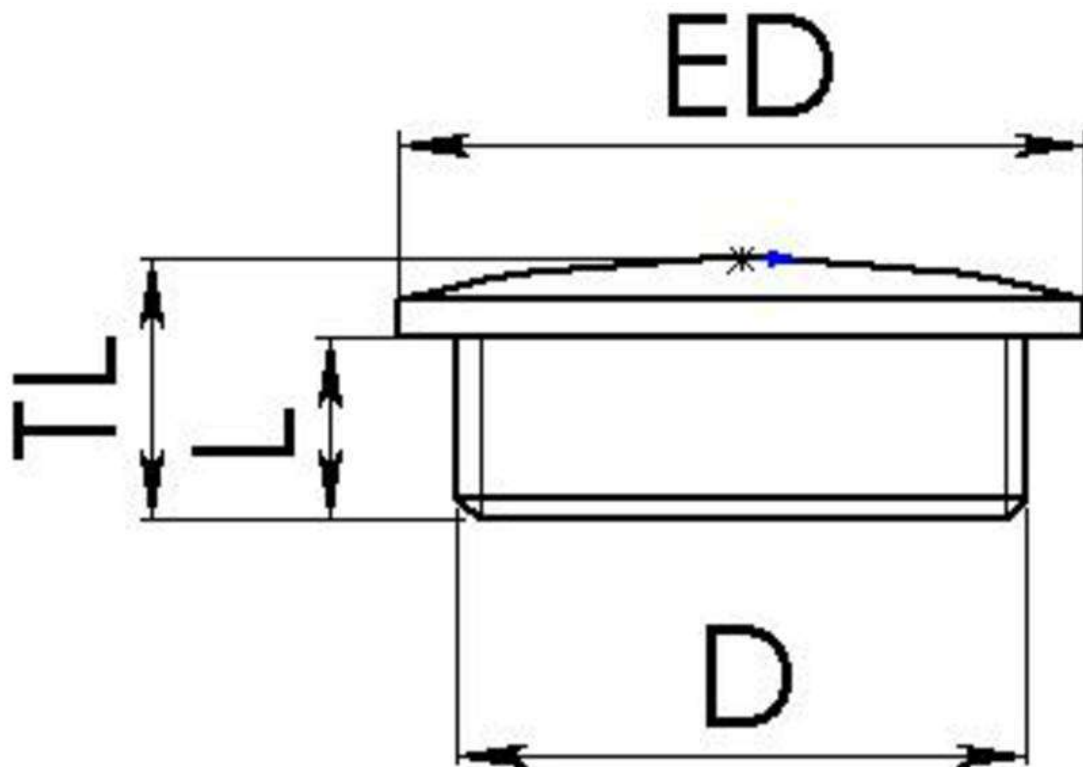
Recommended accessories

| | |
|----------------|----------|
| EMUG 40 | 10060775 |
| EADR 40 | 10062806 |

01.04.2020

Your Contact:

WISKA Hoppmann GmbH
Kisdorfer Weg 28 · 24568 Kaltenkirchen · Germany
☎ +49-4191-508-0 · 📠 +49-4191-508-209
contact@wiska.de · www.wiska.com



Your Contact:

WISKA Hoppmann GmbH

Kisdorfer Weg 28 · 24568 Kaltenkirchen · Germany

☎ +49-4191-508-0 · 📠 +49-4191-508-209

contact@wiska.de · www.wiska.com