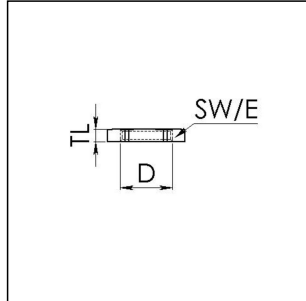


## ESMU 20

Locknut, stainless steel



Products may differ in size, colour and appearance to those shown. If you require further information or customisation, please contact us directly.





<b>Material</b>	Stainless steel 1.4305
<b>Thread type</b>	M
<b>Ø Connection thread D</b>	20
<b>Lead</b>	1,5
<b>Key width SW</b>	24 mm
<b>Collar diameter (E)</b>	27 mm
<b>Total length TL</b>	3 mm
<b>WISKA-Order no.</b>	10064190
<b>Type</b>	ESMU 20
<b>Packing unit</b>	10
<b>ETIM-Classification</b>	EC000940

03.04.2020

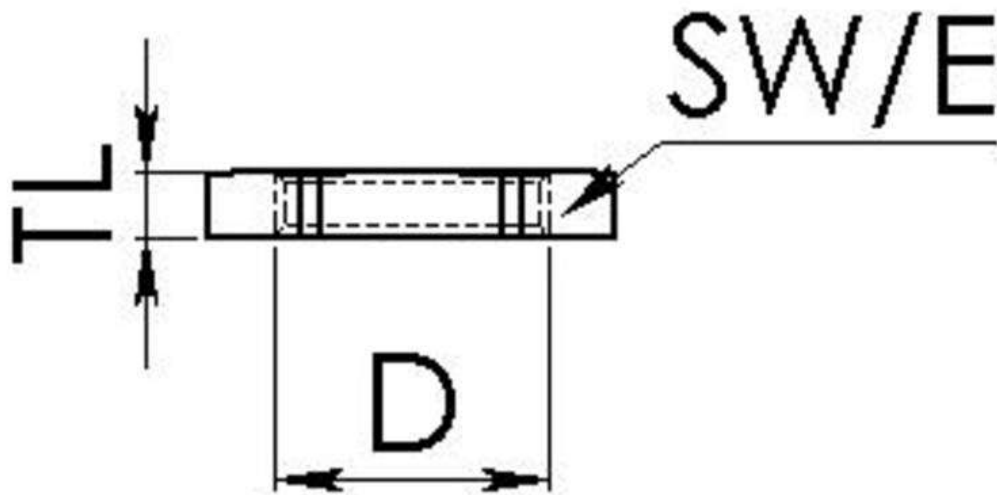
Your Contact:

**WISKA UK Ltd.**

Unit 7, Hurling Way · St. Columb Major Business Park · TR9 6SX, St. Columb Major, Cornwall · Great Britain

 +44-12-08816062 ·  +44-12-08816708

info@wiska.co.uk · www.wiska.co.uk



Your Contact:

**WISKA UK Ltd.**

Unit 7, Hurling Way · St. Columb Major Business Park · TR9 6SX, St. Columb Major, Cornwall · Great Britain

☎ +44-12-08816062 · 📠 +44-12-08816708

info@wiska.co.uk · www.wiska.co.uk