



FIREMATE™

CONNECTOR



The **FireMate** safety critical connector has been developed to be used on underground and overground rail networks, commercial and public buildings where it is critical for equipment to work during an evacuation and rescue situation.

Tested to the latest fire standards **BS EN50200:2006** and **BS8434-2:2003 + A2 2009** our connector will maintain its electrical and structural integrity during the harshest of fire conditions. The product is designed to be used in escape route safety equipment; emergency lighting circuits; fire alarms; voice alarms; shutdown systems; fire detection.

Technical Data

Construction and Test Standards:	BS5839-1 2013 section 26.2 e), BS EN50200:2006, BS8434-2:2003 + A2 2009, BS EN61984, BS5266-2016 -8.2.2 b d, GPSPD (2001/95/EC)
Ingress Protection:	IP66
Material:	Nickel Plated Brass
Operating Temperature:	Range: -30°C to +930°C
Clamping Arrangement:	Single compression seal
Earth:	Electrical continuity using earth pin and body connection
Cable Type:	Unarmoured fire rated cable
Number of Cores:	4 + Earth Dali ready
Core Size:	0 to 10mm ²
Current range:	0 to 16 AMPS
Voltage range:	0 to 240 V rms
Max No. of make & break operations (EN61984): on and off load	>500

Fire Test

Fire test: BS EN500200:2006 (Resistance to fire with mechanical shock)	120mins at 830 (+40-0)°C with mechanical shock and a rated voltage of 240v rms
Fire test: BS 8434-2:2003 +A2 2009 (Resistance to fire with mechanical shock and water spray)	120mins at 930 (+40-0)°C with mechanical shock. and a rated voltage of 240v rms. (60 mins fire and shock and 60 mins fire, shock and water)

Ordering Options

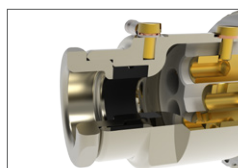
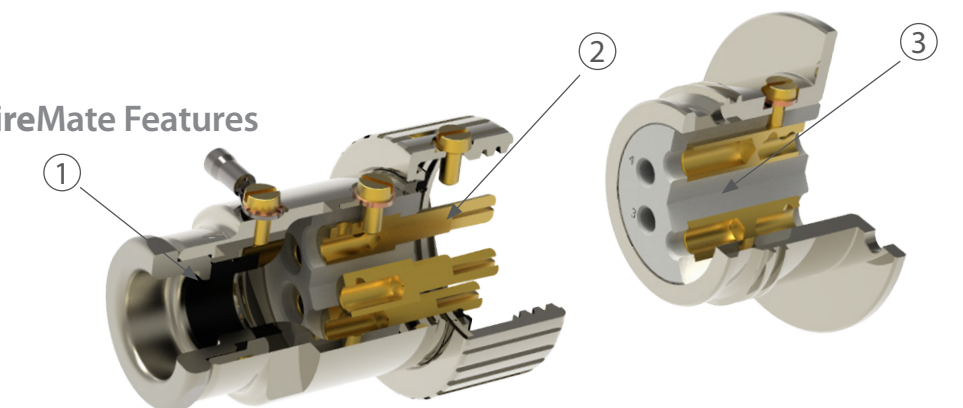
Manufacture	Hawke	H
Type	FireMate	FM
Material	Nickel Plated Brass	N
Connector Style	Connector Plug	CP
The CP is always supplied with pin contacts	Connector Receptacle	CR
	Bulkhead Receptacle	BR
	Besa Box Receptacle	BB

Sample Order Code

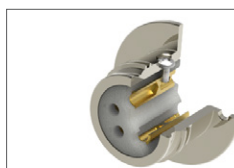
Manufacture/Type/Material etc	H/FM/N/CP = Hawke, Firemate, Nickel Plated Brass, Connector Plug.
--------------------------------------	---

Product design and specifications are subject to change without notice. Please check the Hawke website for latest specifications.
www.ehawke.com

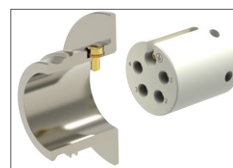
FireMate Features



1. Unique fireproof rear intumescent seal to accommodate a wide range of cables.



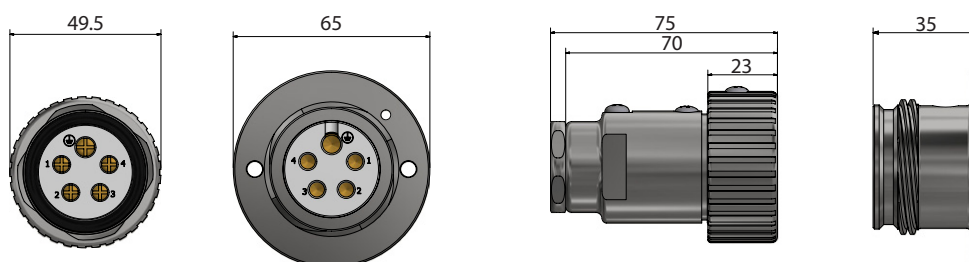
2. Quick Connect via a 4 start thread Earth and Key location Screw.



3. Unique high temperature pin and socket insert. Integral moulded keyway to ensure fool proof assembly.

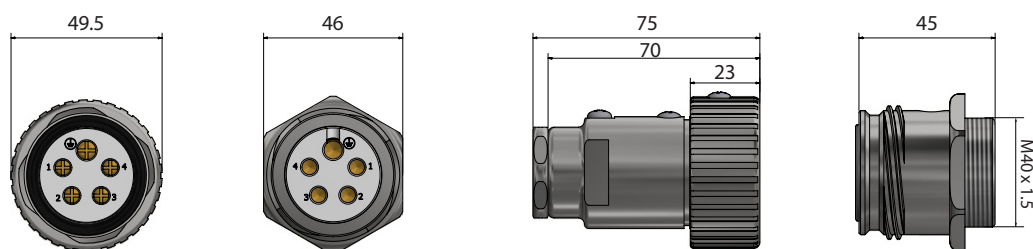
Besa Box Receptacle to Connector Plug

For Besa Box Mounting



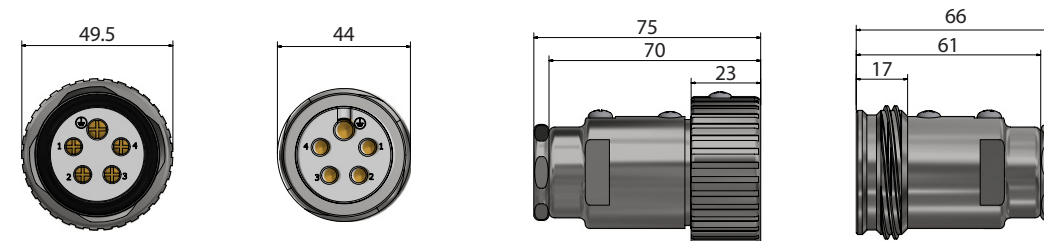
Bulkhead Receptacle to Connector Plug

For Enclosure/Equipment Mounting



Connector Receptacle to Connector Plug

For Inline Connections



Connector plugs and connector receptacles accept a cable OD of 11mm to 14.3mm.
For any cable OD outside of these sizes, please contact Hawke Sales for more details.
All bulkhead receptacles are supplied with an M40 entry.