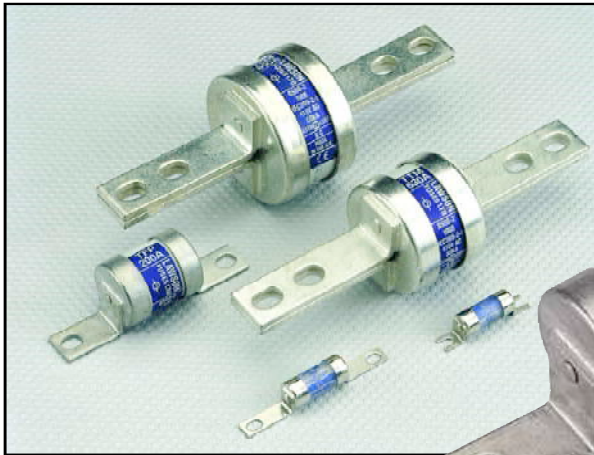


INDUSTRIAL FUSE-LINKS WITH BOLTED CONNECTIONS

TYPE N&T

400/415 Volt Industrial Fuse-Links with Bolted Connections to BS88: Part 2 • IEC60269-2 • EN60269-2

Rated voltages: 415V a.c., 250V d.c. Breaking range and utilization category: gG Rated breaking capacities: 80kA at 415V a.c, 40kA at 250V d.c.



Lawson Type "N" & "T" fuse-links are for use in industrial installations and can be fitted into BS88 bolted fuse-holders and distribution fusegear. The range includes all BS88: Part 2 reference fuse-links up to 800 Amps and has gG classification, ensuring compliance with the current edition of the UK Wiring Regulations. Many non-reference tag variants are available to cater for installation in non-standard or specialised equipment.

The range has a rated voltage of 415V a.c. and has been certified at a test recovery voltage of at least 110%. These fuse-links are therefore suitable for use on systems with voltages up to 457V a.c. The range also has a rating of 250V d.c. A complementary range of solid/neutral links is available to suit our fuse-link range.

Product Detail

Product detail - Offset Tag Fuse-Links

| List Reference | Current Rating (A) | BS88 Reference | Voltage Rating (V) | Breaking Capacity (kA) | BS Standard | IEC Standard | Carton Quantity | Carton Weight (Kg) |
|----------------|----------------------|----------------|--------------------|------------------------|--------------|--------------|-----------------|--------------------|
| NIT | 2,4,6,10,16,20,25,32 | A1 | 415a.c. 240d.c. | 80kA-a.c. 40kA-d.c. | BS88: Part 2 | 60269-2 | 10 | 0.13 |
| GTIA | 2,4,6,10,16,20,25,32 | A2 | | | | | 10 | 0.20 |
| TIA | 2,4,6,10,16,20,25,32 | A2 | | | | | 10 | 0.54 |
| TIS | 35,40,50,63, | A3 | | | | | 10 | 0.58 |
| TIS | 80,100,125 | A3 | | | | | 10 | 0.70 |
| TCP | 6,10,16,20,25,32, | A4 | | | | | 5 | 0.46 |
| TCP | 40,50,63,80,100 | A4 | | | | | 5 | 0.52 |
| TFP | 125,160,200 | (as A4) | | | | | 5 | 0.82 |
| 85TM | 200,250,315,355,400 | - | | | | | 1 | 0.46 |
| 86 TT | 450,500,560,630, | - | | | | | 1 | 0.58 |
| 86 TT | 670,710,750,800 | - | | | | | 1 | 0.70 |

Product detail - Central Tag Fuse-Links

| List Reference | Current Rating (A) | BS88 Reference | Voltage Rating (V) | Breaking Capacity (kA) | BS Standard | IEC Standard | Carton Quantity | Carton Weight (Kg) |
|----------------|---------------------|----------------|--------------------|------------------------|--------------|--------------|-----------------|--------------------|
| TB | 2,4,6,10,16,20,25, | - | 415a.c. 240d.c. | 80kA-a.c. 40kA-d.c. | BS88: Part 2 | 60269-2 | 10 | 0.60 |
| TB | 32,35,40,50,63 | - | | | | | 10 | 0.60 |
| TBC | 2,4,6,10,16,20,25, | (as B1) | | | | | 10 | 0.62 |
| TBC | 32,35,40,50,63 | (as B1) | | | | | 10 | 0.62 |
| TC | 80,100 | B1 | | | | | 5 | 0.58 |
| TF | 125,160,200 | B2 | | | | | 5 | 0.85 |
| 84TF | 80,100,125,160,200 | - | | | | | 5 | 0.94 |
| TKF | 250,315 | B3 | | | | | 1 | 0.23 |
| 84TK | 250,315 | - | | | | | 1 | 0.23 |
| TKM | 125,160,200,250,315 | - | | | | | 1 | 0.28 |
| TMF | 315,355,400 | B4 | | | | | 1 | 0.43 |
| TM | 250,315,355,400 | C1 | | | | | 1 | 0.55 |
| TMT | 355,400 | - | | | | | 1 | 0.60 |
| TTM | 450,500,560,630 | C2 | | | | | 1 | 0.74 |
| TT | 450,500,560,630 | - | | | | | 1 | 0.60 |
| TLM | 670,710,750,800 | C3 | | | | | 1 | 1.00 |
| TLT | 670,710,750,800 | - | | | | | 1 | 1.30 |
| TLU | 450,500,560,630 | D1 | | | | | 1 | 1.50 |
| TLU | 670,710,750,800 | D1 | 1 | 1.50 | | | | |

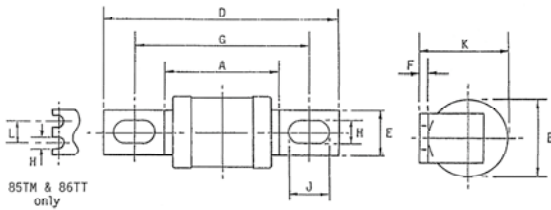
See pages 22 & 23 for the time/current and cut-off current characteristics.
See pages 10 & 11 for Motor Circuit Protection.



INDUSTRIAL FUSE-LINKS WITH BOLTED CONNECTIONS

TYPE N&T

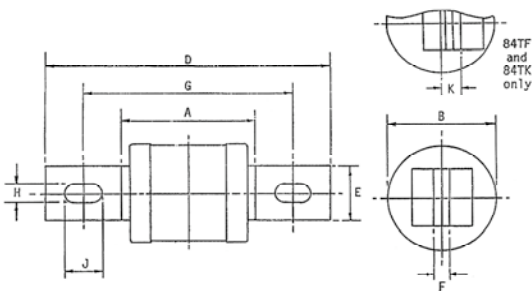
Dimensional Drawings



BS88: Part 2 reference 'A' fuse-link dimensions and tag variants

| BS88 Ref. | Type Ref. | Current Ratings (A) | Dimensions (mm) | | | | | | | | | | |
|-----------|-----------|---------------------------------------|-----------------|-------|-------|-------|-------|-------|-------|-----------|-------|-------|--|
| | | | A max | B max | D max | E max | F nom | G nom | H nom | J nom | K max | L nom | |
| A1 | NIT | 2,4,6,10,16, 20,25*,32* | 33 | 12.7 | 56 | 9.5 | 0.8 | 44.5 | 4.8 | OPEN SLOT | 14.3 | | |
| A2 | GTIA | 2,4,6,10,16, 20,25,32 | 34 | 14.3 | 86 | 9 | 1.2 | 73 | 5.5 | 8 | 16 | | |
| A2 | TIA | 2,4,6,10,16, 20,25,32 | 49 | 22 | 86 | 9 | 1.2 | 73 | 5.5 | 8 | 24 | | |
| A3 | TIS | 35*,40,50,63, 80*,100*,125* | 49 | 22 | 89 | 13 | 1.2 | 73 | 5.5 | OPEN SLOT | 24 | | |
| A4 | TCP | 6,10,16,20,32,40,50,63, 80,100 | 51 | 22 | 110 | 20 | 2.4 | 94 | 8.7 | 11 | 25 | | |
| as A4 | TFP | 125,160,200 | 51 | 35 | 110 | 20 | 2.4 | 94 | 8.7 | 11 | 38 | | |
| - | 85TM | 200,250,315,355*,400 | 56 | 51 | 117 | 45 | 4.8 | 102 | 8.7 | OPEN SLOT | 45 | 22 | |
| - | 86TT | 450*,500,560*,630, 670*,710*,750*,800 | 56 | 61 | 117 | 45 | 4.8 | 102 | 8.7 | OPEN SLOT | 54 | 22 | |
| - | | | 56 | 73 | 117 | 45 | 4.8 | 102 | 8.7 | OPEN SLOT | 61 | 22 | |

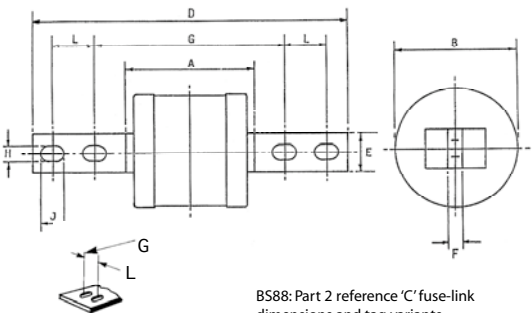
* Non-Standardized current rating additional to BS88: Part 2



BS88: Part 2 reference 'B' fuse-link dimensions and tag variants

| BS88 Ref. | Type Ref. | Current Ratings (A) | Dimensions (mm) | | | | | | | | | |
|-----------|-----------|--------------------------------|-----------------|-------|-------|-------|-------|-------|-------|-------|-------|--|
| | | | A max | B max | D max | E max | F nom | G nom | H nom | J nom | K max | |
| - | TB | 2,4,6,10,16,25,32,35*,40,50,63 | 45 | 22 | 111 | 13 | 1.2 | 97 | 7.1 | 13 | | |
| as B1 | TBC | 2,4,6,10,16,25,32,35*,40,50,63 | 45 | 22 | 137 | 15 | 1.4 | 111 | 8.7 | 14 | | |
| B1 | TC | 80,100 | 45 | 26 | 137 | 20 | 3.2 | 111 | 8.7 | 14 | | |
| B2 | TF | 125,160,200 | 45 | 35 | 137 | 20 | 3.2 | 111 | 8.7 | 14 | | |
| - | 84TF | 80,100,125,160,200 | 45 | 35 | 121 | 20 | 3.2 | 99 | 8.7 | 14 | 5 | |
| B3 | TKF | 250,315 | 45 | 41 | 137 | 26 | 3.2 | 111 | 8.7 | 14 | | |
| - | 84TK | 250,315 | 45 | 41 | 121 | 26 | 3.2 | 99 | 8.7 | 14 | 8 | |
| - | TKM | 125,160,200,250,315 | 45 | 41 | 159 | 26 | 3.2 | 133 | 10.3 | 14 | | |
| B4 | TMF | 315,355*,400 | 52 | 51 | 137 | 26 | 6.4 | 111 | 8.7 | 16 | | |

* Non-Standardized current rating additional to BS88: Part 2



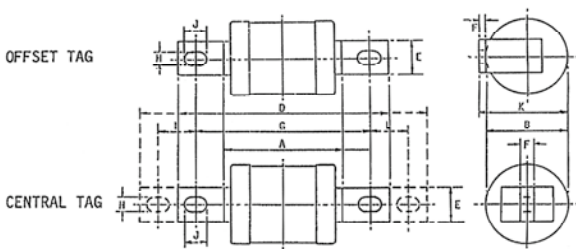
BS88: Part 2 reference 'C' fuse-link dimensions and tag variants

Parallel tag fixings on TLU only

| BS88 Ref. | Type Ref. | Current Ratings (A) | Dimensions (mm) | | | | | | | | | |
|-----------|-----------|---------------------------------------|-----------------|-------|-------|-------|-------|-------|-------|-------|-------|--|
| | | | A max | B max | D max | E max | F nom | G nom | H nom | J nom | L nom | |
| C1 | TM | 250*,315*,355*,400 | 52 | 51 | 210 | 26 | 6.3 | 133 | 10.3 | 16 | 25.4 | |
| - | TMT | 355*,400 | 52 | 61 | 267 | 26 | 6.3 | 165 | 10.3 | 16 | 31.8 | |
| C2 | TTM | 450*,500,560*,630 | 54 | 61 | 210 | 26 | 7.8 | 133 | 10.3 | 16 | 25.4 | |
| - | TT | 450*,500,560*,630 | 54 | 61 | 267 | 26 | 7.8 | 165 | 10.3 | 16 | 31.8 | |
| C3 | TLM | 670*,710*,750*,800 | 56 | 73 | 210 | 26 | 9.5 | 133 | 10.3 | 16 | 25.4 | |
| - | TLT | 670*,710*,750*,800 | 56 | 73 | 267 | 26 | 9.5 | 165 | 10.3 | 16 | 31.8 | |
| D1 | TLU | 450*,500,560*,630, 670*,710*,750*,800 | 56 | 73 | 267 | 26 | 9.5 | 149 | 10.3 | 16 | 31.8 | |

* Non-Standardized current rating additional to BS88: Part 2

Motor Circuit Protection Fuse-Links see pages 10 & 11



| BS88 Ref. | Type Ref. | Current Ratings (A) | Dimensions (mm) | | | | | | | | | |
|---------------------------|-----------|---------------------|-----------------|-------|-------|-------|-------|-------|-------|-----------|-------|-------|
| | | | A max | B max | D max | E max | F nom | G nom | H nom | J nom | K max | L nom |
| Offset Tag | | | | | | | | | | | | |
| A1 | NIT | 20M25,32 | 33 | 12.7 | 56 | 9.5 | 0.8 | 44.5 | 4.8 | OPEN SLOT | 14.3 | |
| A2 | TIA | 32M40,50,63 | 49 | 22 | 86 | 9 | 1.2 | 73 | 5.5 | 8 | 24 | |
| A3 | TIS | 63M80,100M125 | 49 | 26 | 89 | 13 | 1.2 | 73 | 5.5 | OPEN SLOT | 28 | |
| A4 | TCP | 100M125,160,200 | 51 | 35 | 110 | 20 | 2.4 | 94 | 8.7 | 11 | 38 | |
| as A4 | TFP | 200M250,315 | 51 | 41 | 110 | 20 | 2.4 | 94 | 8.7 | 11 | 45 | |
| Central Tag (single hole) | | | | | | | | | | | | |
| - | TB | 63M80,100 | 45 | 26 | 111 | 13 | 1.2 | 97 | 7.1 | 13 | - | |
| as B1 | TBC | 63M80,100 | 45 | 26 | 137 | 20 | 3.2 | 111 | 8.7 | 14 | - | |
| B1 | TC | 100M125,160,200 | 45 | 35 | 137 | 20 | 3.2 | 111 | 8.7 | 14 | - | |
| B2 | TF | 200M250,315 | 45 | 41 | 137 | 20 | 3.2 | 111 | 8.7 | 14 | - | |
| B3 | TKF | 315M400* | 45 | 51 | 137 | 26 | 6.4 | 111 | 8.7 | 14 | - | |
| B4 | TMF | 400M500* | 52 | 61 | 137 | 26 | 6.4 | 111 | 8.7 | 16 | - | |
| Central Tag (double hole) | | | | | | | | | | | | |
| C1 | TM | 400M500* | 51 | 61 | 210 | 26 | 6.4 | 133 | 10.3 | 16 | - | 25.4 |

* Non-Standardized current rating additional to BS88: Part 2

NOTE: Cont= Continuous Current. Motor = Motor Starting Current